

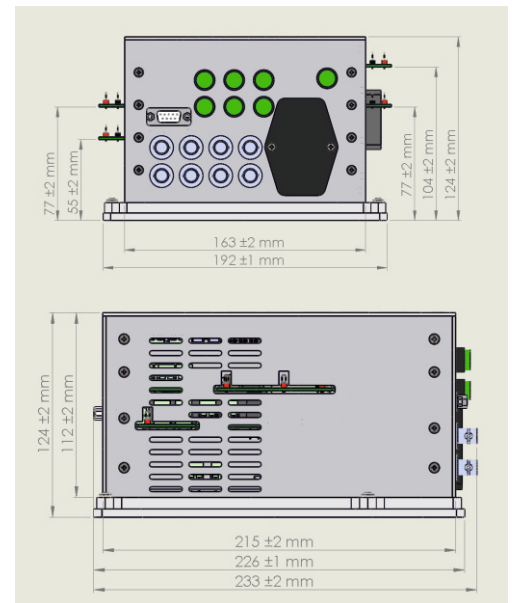


MODEL
SQX20638A

HIGHLIGHTS

- Static Load Emulation
- Dynamic Pulse Load Emulation
- External Trigger
- Voltage Pin Hooks
- PCB Current Loops for Oscilloscope Current Probes

DIMENSIONS



All specifications are subject to change without notice.

SPECIFICATIONS

Specifications	
Front Panel	D-SUB 25 +10.8/+4V/-5V/+5V
Rear Panel	Connector Db9 -5V/+5V/+4V/3.3V
	Connectors BNC 7A_SignalOn/13A_SignalOn/14A_SignalOn/0.26A_SignalOn/26A_SignalOn
Output	Connectors BNC OSC_0.26A/OSC_7A/OSC_14A
Voltage Test Point	Pin Hook
Current Test Point	PCB Loop for Tektronic Current Sensor
Static Loads	5 Loads
Dynamic Loads	4 Loads
Dynamic Loads Speed	5 KHz
Enable Push Button	Yes
Dynamic Load Connection	BNC
Power	
AC Line Input	220Vac
Frecuency	50Hz
Monitors	
Indicator LEDs	Push Buttons backlights
Size and Weight	
Dimensions	long 200mm/width 200mm/high 125mm
Weight	8 lb
Environmental	
Temperature	Operating over 0/55°C at sea level Storage Temp -30°C/70°C
Humidity	0-95 % relative humidity ,non-condensing
Cooling	Forced Air Cooling

All specifications are subject to change without notice.



HEADQUARTERS

Monseñor P. Cabrera 5020 - Córdoba, X5008HJP Argentina
Tel.: (54) 351 4770044 / Fax (54) 351 4764576
sales@dta-sa.com

ISRAEL Office

Ultram Technologies Ltd.
58 Hameyasdim Street, Moshav Mazor, 73160
Tel.: (972) 03 9331696
sales@ultramtech.co.il

USA Office

GM Systems LLC
27 Kim Place, Kings Park, N.Y. 11754-5025
Tel.: 631-269-3820
terlizzi@gmsystems.com



for more information visit:
<http://www.dta-sa.com/>